

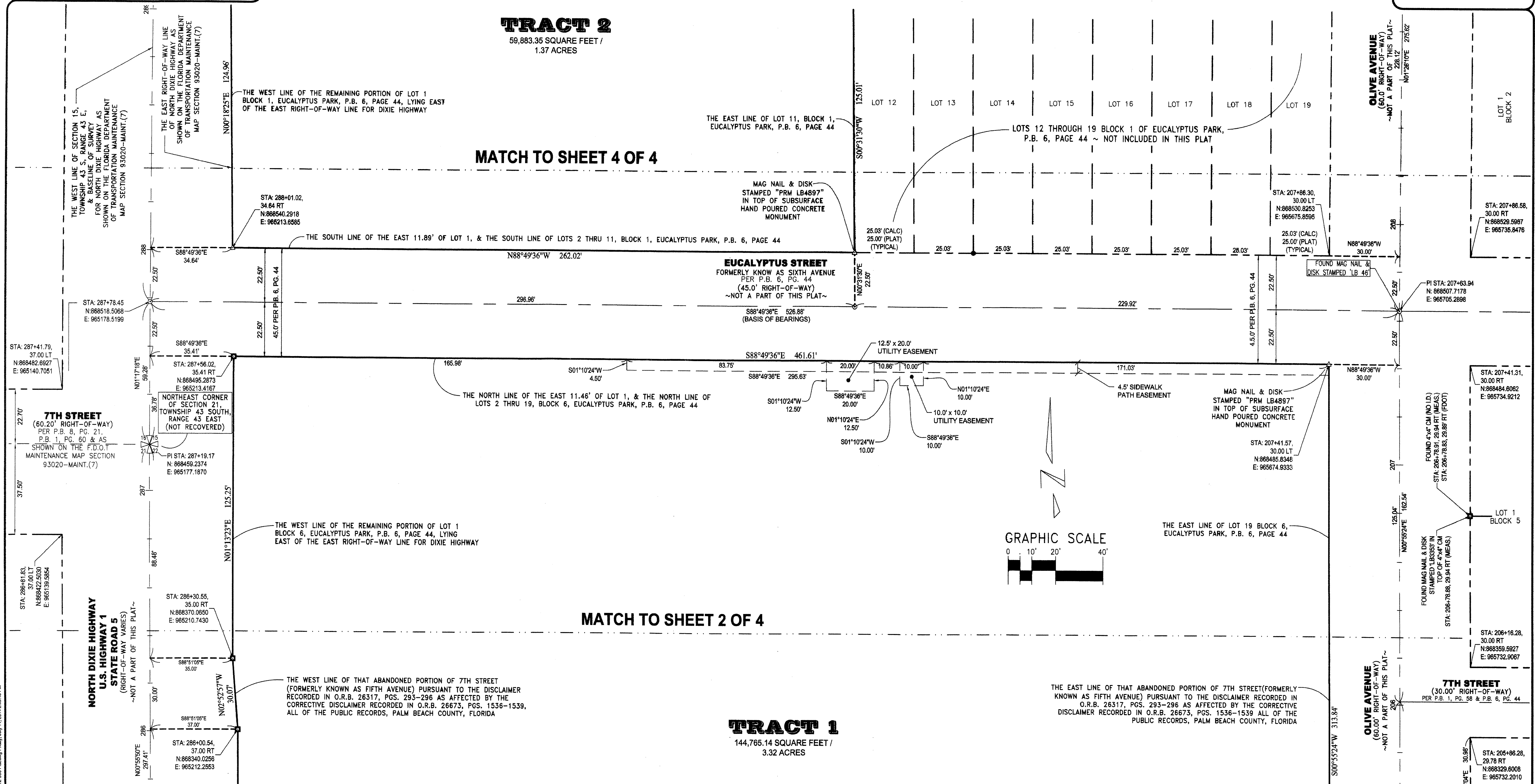
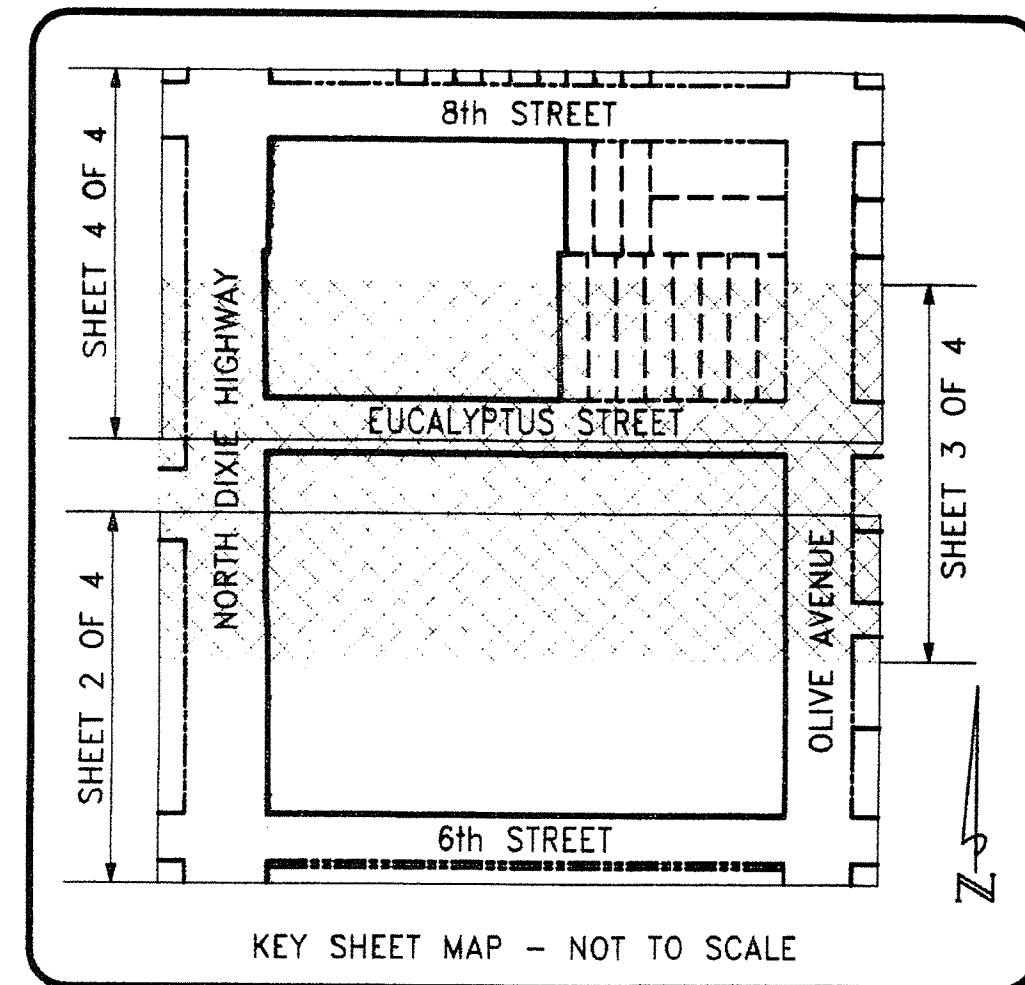
LOFTIN PLACE

BEING A REPLAT OF A PORTION OF BLOCK 1, RAILWAY ADDITION, PLAT BOOK 1, PAGE 58, LYING WEST OF OLIVE AVENUE AND LESS THE RIGHT-OF-WAY FOR DIXIE HIGHWAY, A REPLAT OF LOT 1, LESS THE WEST 12.00 FEET THEREOF, AND ALL OF LOTS 2,3,4,5,6,7,8,9,10 AND 11, BLOCK 1, TOGETHER WITH ALL OF BLOCK 6, LYING WEST OF OLIVE AVENUE AND LESS THE RIGHT-OF-WAY FOR DIXIE HIGHWAY AMENDED PLAT OF EUCALYPTUS PARK, PLAT BOOK 6, PAGE 44, AND A REPLAT OF LOTS 1 AND 2, LESS THE WEST 12.0 FEET THEREOF, AND ALL OF LOTS 3,4,5,6,7,8, BLOCK 7, BRELSFORD PARK ADDITION TO WEST PALM BEACH, PLAT BOOK 8, PAGE 21 TOGETHER WITH THAT ABANDONED PORTION OF 7TH STREET (FORMERLY KNOWN AS FIFTH AVENUE), PURSUANT TO THE DISCLAIMER RECORDED IN O.R.B. 26317, PGS. 293-296 AS AFFECTED BY THE CORRECTIVE DISCLAIMER RECORDED IN O.R.B. 26673, PGS. 1536-1539, ALL OF THE PUBLIC RECORDS, PALM BEACH COUNTY, FLORIDA WITH ALL OF THE ABOVE DESCRIBED LAND LYING AND BEING IN A PORTION OF SECTIONS 15 & 22, TOWNSHIP 43 SOUTH, RANGE 43 EAST, PALM BEACH COUNTY, FLORIDA

SHEET 3 OF 4

JULY 2014

STATE OF FLORIDA
 COUNTY OF PALM BEACH
 THIS PLAT WAS FILED
 FOR RECORD AT _____ M.
 THIS DAY OF _____ 2014
 AND DULY RECORDED IN PLAT
 NO. _____ ON PAGES _____
 THRU _____
 SHARON R. BOCK
 CLERK AND COMPTROLLER
 BY _____ D.C.



P:\112-566-Loflin-Place\DWG\112-566-Loftin-Place.dwg, July 11, 2014, 2:09:43 PM

LEGEND OF SYMBOLS:

- = 4"x4" CONCRETE MONUMENT STAMPED "P.R.M. LB4897" OR AS NOTED.
- △ = MAG NAIL & DISK STAMPED "P.R.M. LB 4897" OR AS NOTED.
- = MAG NAIL & DISK STAMPED "LB 4897" OR AS NOTED.

PROPERTY CONTROL ABBREVIATIONS

P.C.P. = PERMANENT CONTROL POINT	P.C. = POINT OF CURVATURE
P.R.M. = PERMANENT REFERENCE MONUMENT	P.T. = POINT OF TANGENCY
CONC. = CONCRETE	P.I. = POINT OF INTERSECTION
MON. = MONUMENT	R. = RADIUS
M.N.D. = MAG NAIL & DISK	D.B. = DEED BOOK
	RAD. = RADIAL
	N.R. = NON-RADIAL

LEGEND OF ABBREVIATIONS:

° = DEGREES	CB = CHORD BEARING	PG. = PAGE
' = MINUTES	P.C. = POINT OF CURVATURE	P.O.C. = POINT OF COMMENCEMENT
" = SECONDS	P.T. = POINT OF TANGENCY	P.O.B. = POINT OF BEGINNING
R = RADIUS	P.I. = POINT OF INTERSECTION	P.O.T. = POINT OF TERMINUS
Δ = DELTA	RAD. = RADIAL	L.B. = LICENSED BUSINESS
L = ARC LENGTH	N.R. = NON-RADIAL	W.L.E. = WATER LINE EASEMENT
		P.B.C.U.E. = PALM BEACH COUNTY UTILITY EASEMENT

EASEMENT / MISCELLANEOUS ABBREVIATIONS

L.A.E. = LIMITED ACCESS EASEMENT	D.E. = DRAINAGE EASEMENT
L.B.E. = LANDSCAPE BUFFER EASEMENT	U.E. = UTILITY EASEMENT
L.M.E. = LAKE MAINTENANCE EASEMENT	L.W.D. = LAKE WORTH DRAINAGE DISTRICT
S.L.E. = SANITARY SEWER LINE EASEMENT	
W.L.E. = WATER LINE EASEMENT	
P.B.C.U.E. = PALM BEACH COUNTY UTILITY EASEMENT	

KESHAVARZ ASSOCIATES
 Civil Engineers • Land Surveyors
 711 North Dixie Highway, Suite 201
 West Palm Beach, Florida 33401
 Tel: (561) 689-6900 Fax: (561) 689-5126

THIS INSTRUMENT WAS PREPARED BY SCOTT F. BRYSON, IN AND FOR THE OFFICES OF KESHAVARZ & ASSOCIATES, INC. 711 NORTH DIXIE HIGHWAY, SUITE 201, WEST PALM BEACH, FLORIDA 33401 TELEPHONE (561) 689-8600.

DATE: 12/11/13	CHECKED: SFB	PROJECT No.	SHEET No.
SCALE: 1" = 20'	APPROVED: SFB	12-996	3 of 4
DRAWN: SFB	DWG No: D12-996P		